

**Notes of Meeting****MEDICAL STAFF ISSUES, EASTERN HEALTH****June 10, 2005**

Present: Ms. Fay Matthews  
Ms. Pat Coish-Snow  
Mr. George Butt  
Ms. Pat Pilgrim  
Ms. Louise Jones  
Dr. Bob Williams

The issues of the number and organization of the Medical Advisory Committee structures, Medical Staff Associations, as well as the Medical Administrative arrangements for Eastern Health were discussed in some detail.

It was felt that given the geography and diverse roles of each part of the region that Local Medical Advisory Committees (LMAC's) will continue to be needed. These would provide input into and have representation on a Regional Medical Advisory Committee (RMAC). The Chair of the RMAC would sit on and report to the Board of Trustees, Eastern Health.

It was felt the current Medical Staff Associations would stay in place, be represented on and work with the Local Medical Advisory Committees (LMAC's). The four Medical Staff Association presidents would nominate one of their members to sit on the Board of Trustees of Eastern Health.

There would be part-time Medical Directors / Clinical Chiefs in each of Burin, Clarendville/Bonavista and Avalon areas. They would be paid for their administrative function, work with the LMAC's and report to the Chief Operating Officers (COO's) in their area.

Medical Administration would be brought together in Eastern Health through a new office – Director of Medical Services. The office would be responsible for medical issues within Eastern Health working with the Clinical Chiefs throughout the region and with the Clinical Chiefs and LMAC in St. John's. The Director of Medical Services would be a resource to the RMAC. The Director of Medical Services will liaise with the COO's and report to the Vice President, Quality, Diagnostic and Medical Service.

**Medical Advisory Committee Structures**

Local Medical Advisory Committees for:

- 1) St. John's
- 2) Burin Peninsula
- 3) Clarenville/Bonavista
- 4) Avalon

**Role of Local Medical Advisory Committees (LMAC)**

- 1) Work with RMAC to promote quality of medical care in their area.
- 2) Advise the Chief Operating Officer (COO) on matters related to medical care and other issues as appropriate.
- 3) Serve as a forum for discussion and, if necessary, decision making among the various elements of the medial staff.
- 4) To consider, act on, or refer to RMAC items which are submitted by the COO.
- 5) To approve privileges and recommend on credentials for approval at RMAC.
- 6) Assist in ensuring effective utilization of resources.
- 7) Prepare report for RMAC.

**Regional Medical Advisory Committee (RMAC)**

Composition:

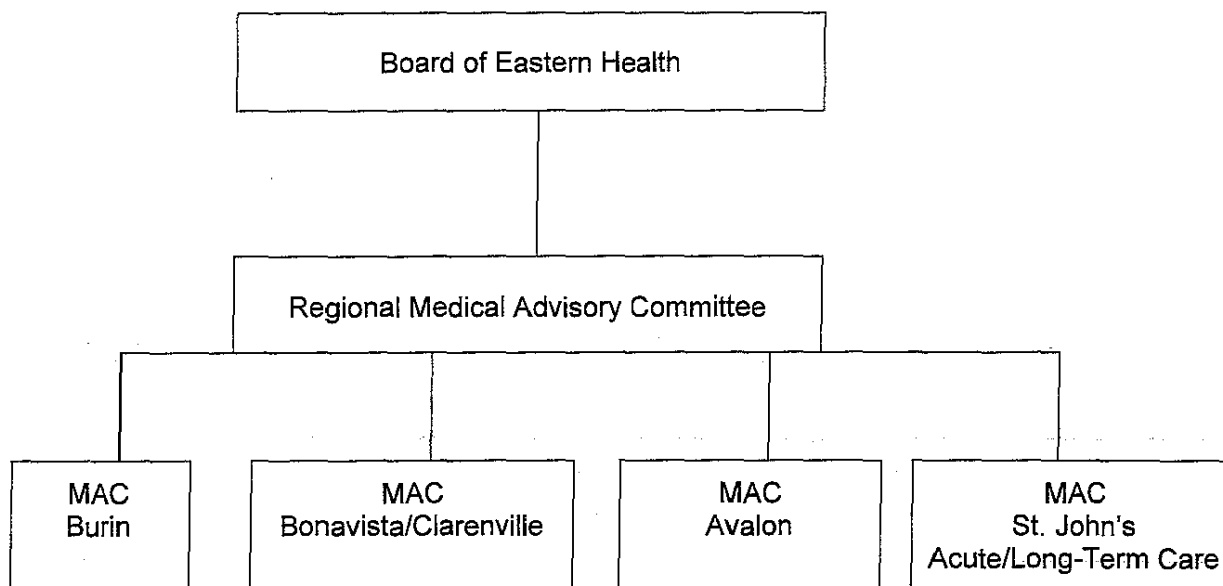
- 1) Chairs of LMAC's or designates/representatives (4)
- 2) Vice President, Quality, Diagnostic and Medical Services (1) - *ex-officio*
- 3) Chief Operating Officers (6) - *ex-officio*
- 4) Medical School representative (1)
- 5) Medical Staff Organization representatives (4)
- 6) Chief Executive Officer (1) - *ex-officio*
- 7) Medical Officer of Health (1)

- 8) Clinical Chiefs (4)
  - Long-Term Care
  - Acute Care
  - Mental Health
  - Cancer Care
- 9) Director of Medical Services (1) - *ex-officio*
- 10) Clinical Chief, Research (1)
- 11) Independent Chair (1)

Total members: 24

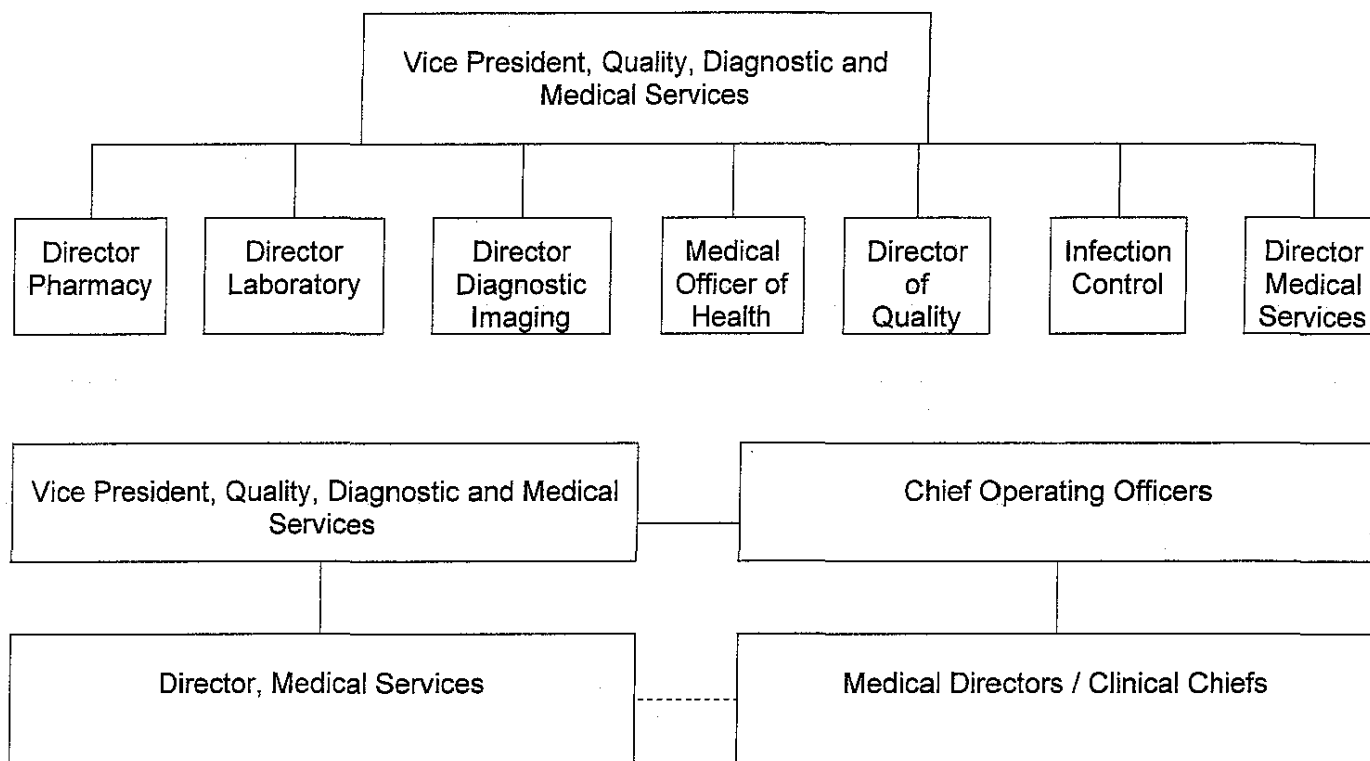
**Role of Regional Medical Advisory Committee (RMAC)**

- 1) Serve as a forum to promote quality medical care throughout Eastern Health.
- 2) Advise the Board on quality of medical care, on the purchase of medical equipment and other appropriate matters.
- 3) Advise the Chief Executive Officer (CEO) on matters related to medical care and other issues as appropriate.
- 4) Serve as a forum for discussion, and, if necessary, decision among the various elements of the Medical Staff.
- 5) To consider, act on or refer other items which are submitted by the CEO, local area MAC's or subcommittees of the RMAC.
- 6) To approve credentials of physicians on recommendation of the LMAC's.
- 7) Prepare a report for each Board meeting.
- 8) Provide reports to the LMAC's and Medical Staff Associations.

**Medical Advisory Committee Structure**

**Medical Staff Organization**

- 1) Medical Staff Organization – Burin
  - 2) Medical Staff Organization – Clarenville/Bonavista
  - 3) Medical Staff Organization – Avalon
  - 4) Medical Staff Organization – St. John's
- President and Vice President of each Medical Staff Organization are members of LMAC's.
  - Presidents are members of RMAC's.
  - One of the 4 Presidents nominated to attend Board meetings.

**Medical Staff Administration****COO, Avalon**

Medical Director / Clinical Chief (0.3)

**COO, Peninsulas**

Medical Director / Clinical Chief Burin (0.3)

Medical Director / Clinical Chief, Clarenville / Bonavista (0.3)

**COO, Long-Term Care**

Medical Director / Clinical Chief (0.3)

**COO's, St. John's**

Part-time – Clinical Chiefs